

FEND® TOOL ATTACHMENT O RING

Model No.: FE-5010

Specifications

- Material: Stainless
- Color: Orange
- Tools O-ring
- Diameter: 1.0mm
- Strength: 0.5lbs
- Girth length: 155mm
- Standards: ANSI/ISEA 121:2018

Tool Tether Use & Inspection Requirements Intended Use

⚠ WARNING — Use Only as Directed

Tool tethers are designed exclusively for hand tools that:

- Weigh no more than the product's specified weight rating
- Include manufacturer approved attachment features, such as:
 - Attachment points
 - Integrated rings
 - Purpose built holes or connection interfaces

Only tools with these features may be safely secured using the appropriate tether end type

User Competency Requirements

TRAINED PERSONNEL ONLY

This product must be used only by individuals trained & competent in:

- Working with hand tools at height
- Operating near moving machinery
- Understanding dropped object prevention systems

Pre Use Inspection Requirements

INSPECT BEFORE EACH USE

Before every use, the user must perform a complete inspection to verify that the tether is in safe working condition

Hardware Inspection

Check all hardware for:

- Abrasion • Deformation • Sharp edges • Cuts or surface damage

Webbing / Material Inspection

Inspect all textile components for:

- Tears, cuts, fraying, or abrasion
- Discoloration or burns
- Holes, mold, or contamination
- Unsplicing or loose, pulled, or broken stitches
- Any other signs of wear or deterioration

Coil Style Tether Inspection

For coil style products, check for:

- Cracks or slits • Stress risers
- Loss of retraction memory
- Any deformation of the coil profile

Prohibited Use

NOT FOR WRIST ATTACHMENT

- Tool tethers are not designed or approved for use on the wrist
- Do not modify, adapt, or repurpose the tether for wrist mounted applications

Removal From Service

DO NOT USE the tether if:

- Any condition listed above is present
- The tether is damaged
- The tether does not function correctly

Immediately **quarantine** the product and remove it from service

Approved Anchor Points

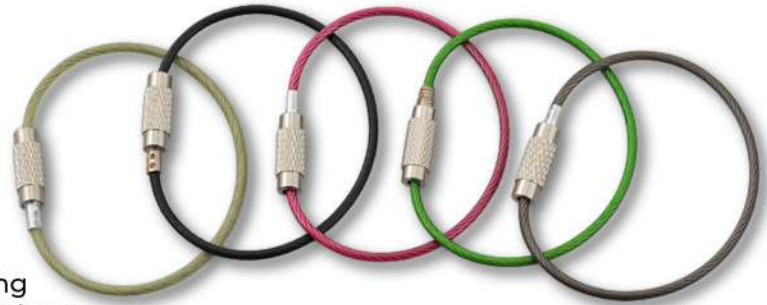
ATTACH ONLY TO APPROVED ANCHORS

Tool tethers must be connected only to belts, harnesses, or anchors that include:

- Manufacturer intended attachment points
 - Rated and approved connection specifications
- Improvised or non rated anchor points are strictly prohibited

Industries

-  Oil & Gas
-  Warehousing, Logistics & Distribution
-  Construction
-  Utilities & Facility Maintenance



*Picture for illustration purposes only

Scan for website



CONTACT DETAILS:

Safety Plus World

(A division of Raja General Trading Company W.L.L.)

P.O. Box:4121, Safat 13042, Kuwait

sc@safetyplusworld.com | www.safetyplusworld.com

Call Us:

 +965 6695 5684

